

C6Amodul / C6Amodul K

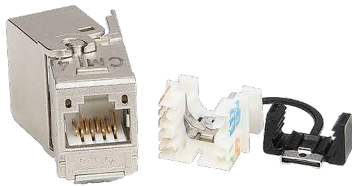
AWG 26/1 - 22/1, AWG 26/7 - 22/7

A077/899425

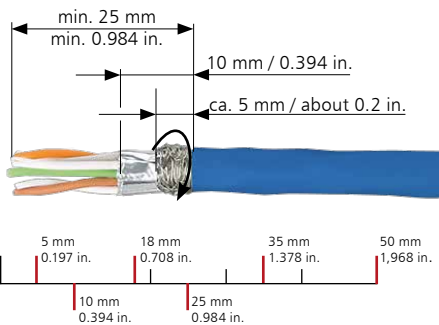
i HINWEIS / NOTE / NOTICE	
	<p>de Anschlussfehler vermeiden! Vor dem Anschluss Montageanleitung sorgfältig lesen!</p> <p>en Avoid connection errors! Read installation instructions carefully before connecting!</p> <p>fr Eviter des erreurs de raccordement ! A lire attentivement avant de procéder au raccordement !</p>

- de Montagehinweis für den Installateur
- en Mounting note for the installer
- fr Notice d'installation pour l'installateur

Modul
130B11-E 180°



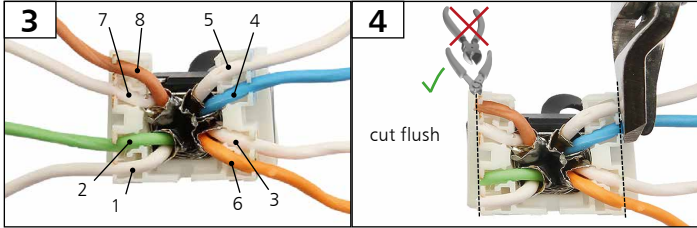
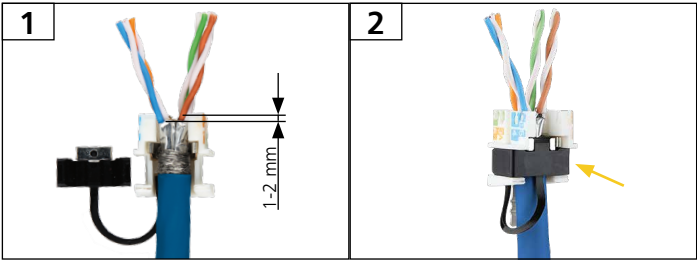
Keystone
130B21-E 180°



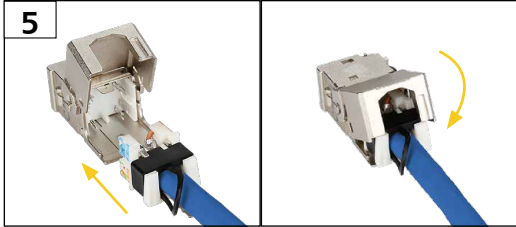
i HINWEIS / NOTE / NOTICE	
de	<p>Kabel AWG 26! Schirmgeflecht 5 mm über den Kabelmantel aufbringen.</p>
en	<p>Cable AWG 26! Wrap the braided shield 5 mm over the cable sheath.</p>
fr	<p>Câble AWG 26 ! Enrouler le blindage tressé 5 mm autour du gainage.</p>

Anschlussbelegung / PIN assignments
Affectation des brins

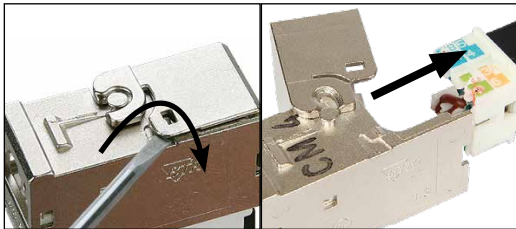
PIN Nr. / No.	T568A	T568B
1	WH-GN	WH-OG
2	GN	OG
3	WH-OG	WH-GN
4	BU	BU
5	WH-BU	WH-BU
6	OG	GN
7	WH-BN	WH-BN
8	BN	BN



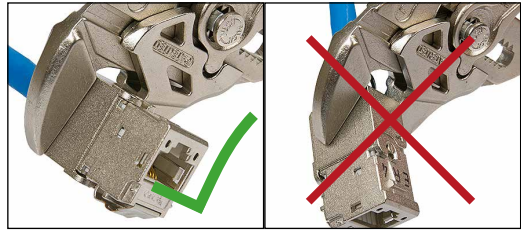
! Nicht schräg einstecken!
Do not plug diagonally!
Ne pas insérer en diagonal !



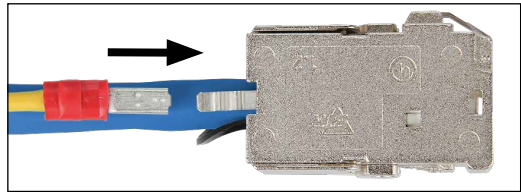
- (de) Demontage
- (en) Disassembly
- (fr) Démontage



- (de) Schließen des Moduls bei Verwendung von Werkzeug
- (en) Closing the module by using a tool
- (fr) Fermeture du module en utilisant un outil



- (de) Potentialausgleich
- (en) Potential equalisation
- (fr) Compensation de potentiel



Optionaler Potentialausgleich mit 2,8 mm Flachstecker
Optional potential equalisation with 2.8 mm flat plug
Compensation de potentiel optionnelle par languette à 2,8 mm