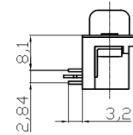
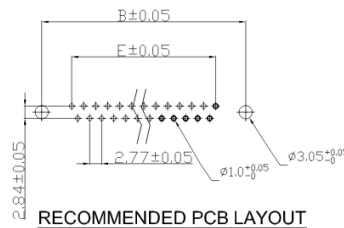
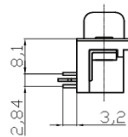
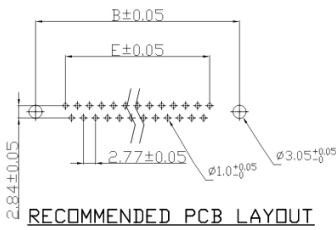
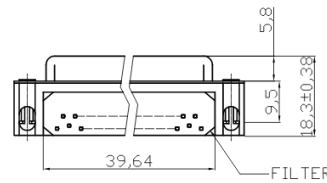
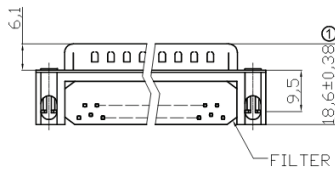
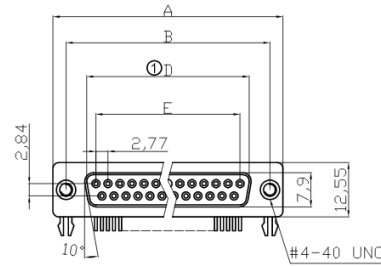


Female



Dimensions					
Positions	A	B	C	E	
15	39.20	33.30	25.25	19.39	

Dimensions					
Positions	A	B	⌀D	E	
15	39.20	33.32	24.70	19.39	

Product Specification

Material

Insulator : Glass-Filled Thermoplastic PBT,UL94V-0, Black

① Contact : Brass,Gold flash selective over Nickel

① Shell : Steel, 100u" Tin over 50u" min. copper

Clinch Nut : Brass, Nickel Plated

① Boardlock : Steel, Tin Plated

Electrical

Contact Resistance : 20 milliohms
Max at 1 AMP DC.

Insulation Resistance : 1000
magohms at 500 VDC

Dielectric Withstanding Voltage :
1000 VAC/rms 60Hz for 1 minute

Current Rating : 3 AMP

Volatge Rating : 250 VAC/rms 60Hz

Operating Temperature: -20°C~+85°C

Product Specification

Material

Insulator : Glass-Filled Thermoplastic PBT, UL94V-0,Black

Contact : Copper alloy, Gold flash selective over Nickel

Shell : Steel,100u" Tin Over 50u" min Copper

Clinch Nut : Copper alloy, Nickel Plated.

Boardlock : Brass, Tin Plated.

Electrical

Contact Resistance : 20 milliohms Max at 1 AMP DC.

Insulation Resistance : 1000magohms at 500 VDC

Dielectric Withstanding Voltage :1000 VAC/rms 60Hz for 1 minute

Current Rating : 3AMP

Volatge Rating : 250 VAC/rms 60Hz

OPERATING TEMPERATURE:-20°C+85°C

RoHS compliant

Unit:mm