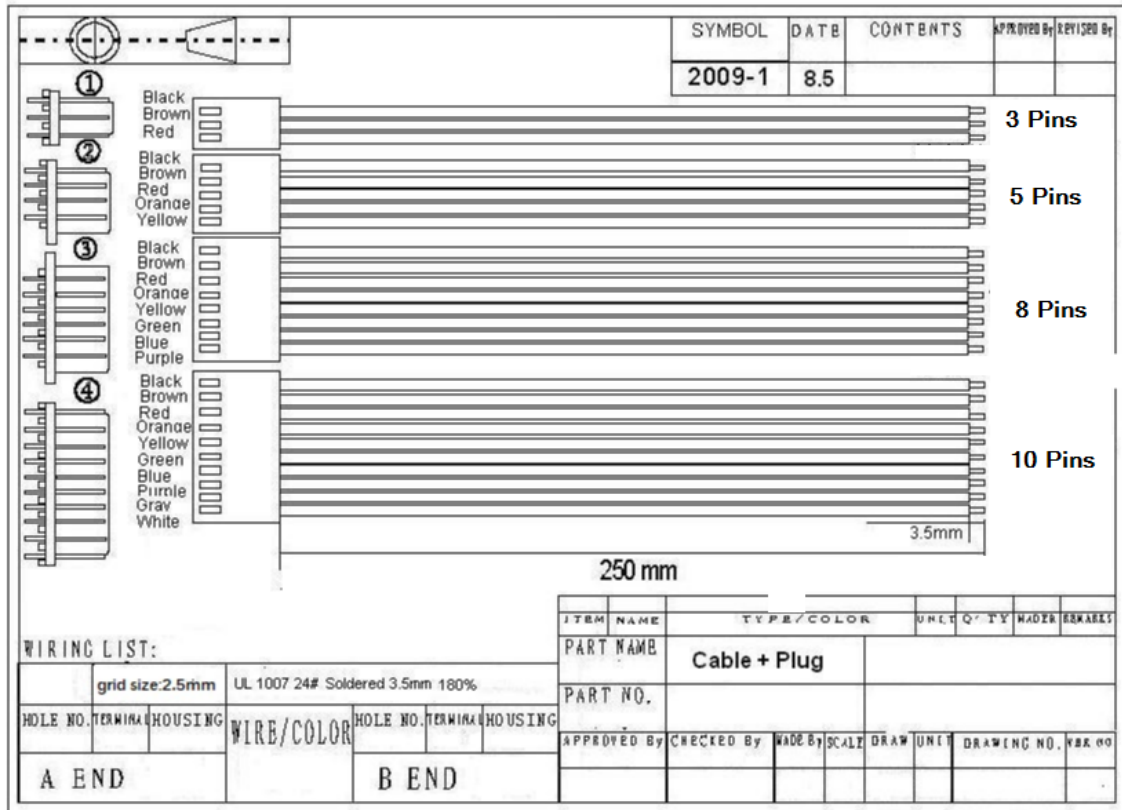


Datasheet

Item no. 1571242 – 3 Pins 1570821 – 5 Pins
 1570822 – 8 Pins 1570823 – 10 Pins

V1_05172018_01_en

PCB Connector (3 Pins, 5 Pins, 8 Pins, 10 Pins)



Connector Type: Socket, Straight, Pin Strip, Straight
 Connectors: Wire – to – Board
 Pins per row: b/n 1571242 – 3 Pins
 b/n 1570821 – 5 Pins
 b/n 1570822 – 8 Pins
 b/n 1570823 – 10 Pins
 Nominal Current: 3 A
 No. of row: 1
 Connection: Open end cable
 Nominal Voltage: 230 V
 Length: 250 mm
 Grid Size: 2.5 mm