



# User Guide

USB 3.0 4-Port Portable Hub

Model No. UH400

## Attention

- ◆ Keep the hub away from water, fire, humidity or hot environments.
  - ◆ Do not heavily drop or impact the hub.
  - ◆ Do not attempt to disassemble, modify or fix the hub by yourself. You run the risk of electric shock and voiding the limited warranty. If you need service, please contact us.
  - ◆ Disconnect the hub from the computer before cleaning it. Do not use liquid cleaning method.
  - ◆ The rated input current is 3.8A.
  - ◆ TP-LINK will not be held responsible for any damage to disk or hard disk data caused by improper use.
- 

## COPYRIGHT & TRADEMARKS

- ◆ Specifications are subject to change without notice. TP-LINK is a registered trademark of TP-LINK TECHNOLOGIES CO., LTD. Other brands and product names are registered trademarks of their respective holders.
- ◆ No part of the specifications may be reproduced in any form or by any means or used to make any derivative such as translation, transformation, or adaptation without permission from TP-LINK TECHNOLOGIES CO., LTD. Copyright © 2015 TP-LINK TECHNOLOGIES CO., LTD. All rights reserved.  
<http://www.tp-link.com>

## FCC & CE

### FCC STATEMENT



This device complies with part 15 of the FCC Rules. Operation is subject to the following two conditions:

- 1) This device may not cause harmful interference.
- 2) This device must accept any interference received, including cause undesired operation.

Any changes or modifications not expressly approved by the party responsible for compliance could void the user's authority to operate the equipment.

---

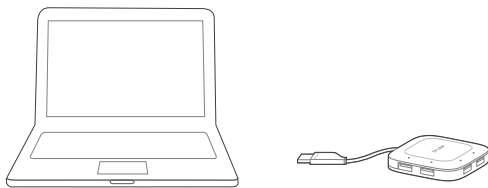
### CE Mark Warning



This is a class B product. In a domestic environment, this product may cause radio interference, in which case the user may be required to take adequate measures.

## Hardware Connection

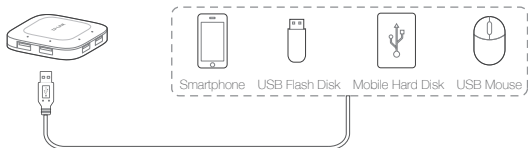
Plug the USB cable into the computer's USB port and the hub is ready to use.



- Usage Tips:**
1. The TP-LINK USB 3.0 hub is plug-and-play and requires no driver for Windows, Mac OS X or Linux systems.
  2. The LED will light up when the corresponding USB port is connected to a USB device.

## Using the Hub

This hub provides your computer with 4 additional USB 3.0 ports for super-speed USB 3.0 connections.



- Usage Tips:**
1. The USB 3.0 ports are also compatible with USB 2.0 and USB 1.1 specifications.
  2. The USB 3.0 ports transfer data at a rate up to 5Gbps, but the actual rate is limited by the USB transfer rate of the connected devices.
  3. The performance of 2.4GHz wireless devices (wireless keyboards, mice, etc.) may be affected when they are working too close to USB 3.0 hubs.



[www.tp-link.com](http://www.tp-link.com)

### Contact Us

If you have any questions related to this product, please contact our technical support:

<http://www.tp-link.com/en/support/contact/>

For more information, please refer to:

[www.tp-link.com](http://www.tp-link.com)