



Safety Instructions



0,1,2,4,6,11,15,18,22



Info Hotline +49 (0) 5041 998 389

Mon. - Do. 7⁰⁰ - 20⁰⁰

Fr. 7⁰⁰ - 17⁰⁰



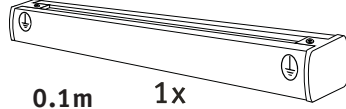
Paulmann Licht GmbH
Quezinger Feld 2
31832 Springe/Germany
www.paulmann.com

Art.-Nr.:

950.86

(+MA 173)
PH 11/13

95086



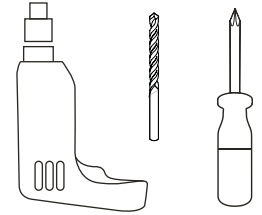
0.1m 1x



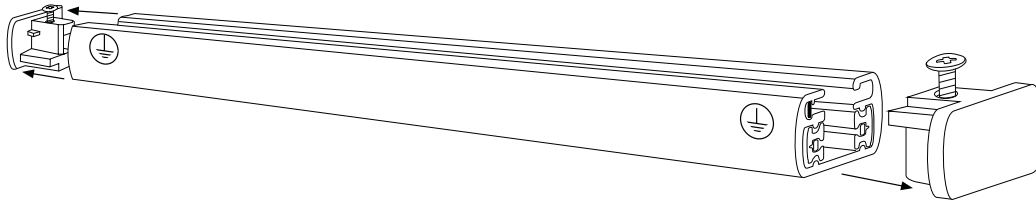
1x



1x

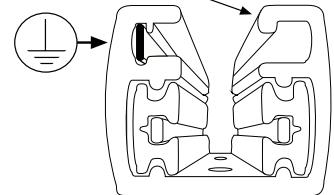
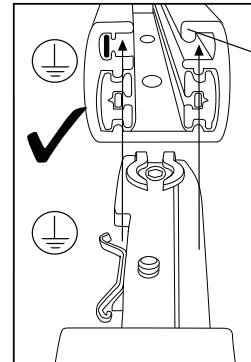
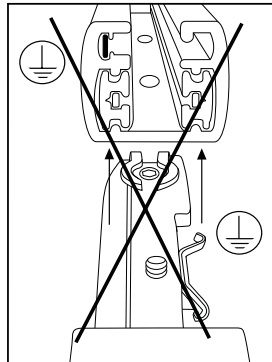
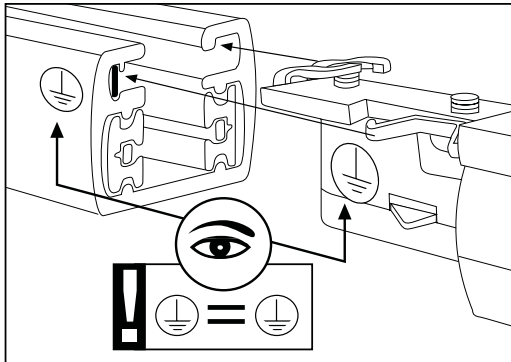
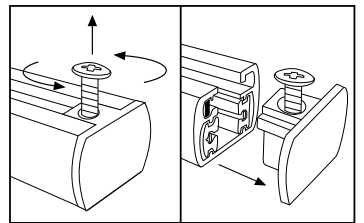


A

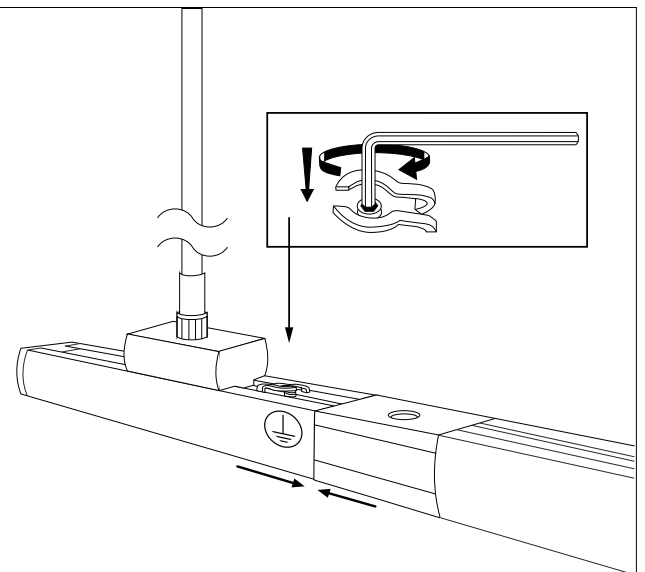
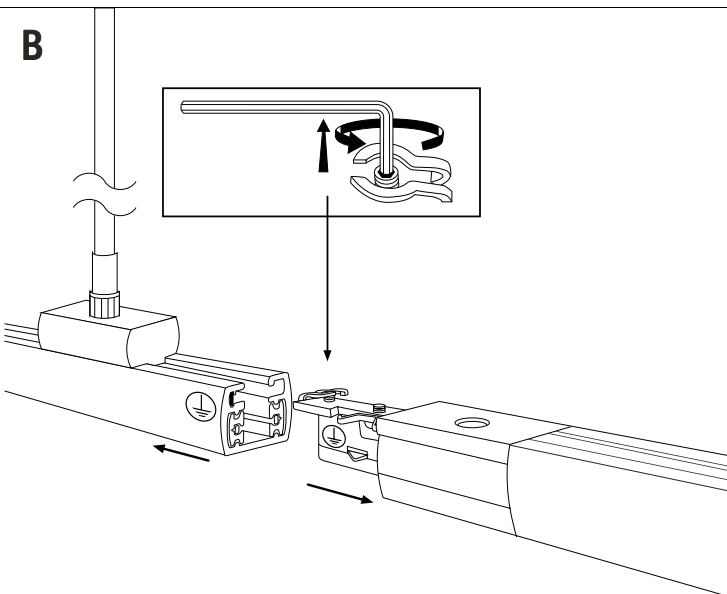


Safety Instructions

Nr.0



B





0,1,2,4,6,11,15,18,22



Info Hotline **+49 (0) 5041 998 389**

Mon. - Do. 7⁰⁰ - 20⁰⁰

Fr. 7⁰⁰ - 17⁰⁰



Paulmann Licht GmbH
Quezinger Feld 2
31832 Springe/Germany
www.paulmann.com

Art.-Nr.:

950.86

(+MA 173)
PH 11/13 